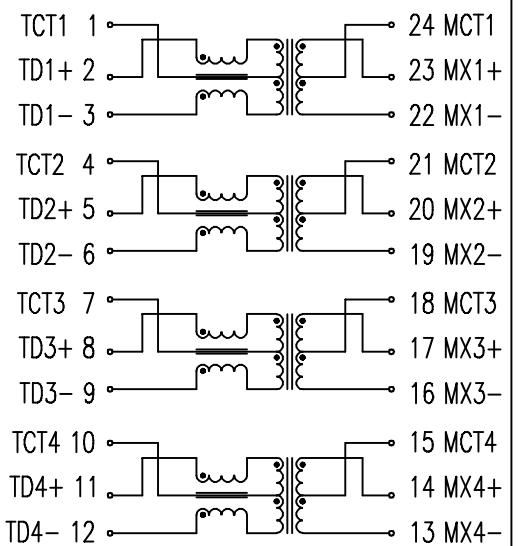


SUGGESTED PAD LAYOUT



ELECTRICAL CHARACTERISTICS :

1. INSULATION HI-POT : 1500 Vrms/0.5mA 1 Sec.
2. TURN RATIO ($\pm 5\%$) : 1CT : 1CT $\pm 5\%$
3. OCL : (@100KHz, 0.1Vrms) 350uH MIN. , 20mA DC Bias
120uH MIN. , 30mA DC Bias
4. INSERTION LOSS : 0.3MHz = -1.2 dB MAX.
1-125MHz = -1 dB MAX.
5. RETURN LOSS (dB MIN. @100 Ω) : 1-40MHz -16
40-100MHz -10
6. DIFFERENTIAL TO COMMON MODE REJECTION (dB MIN.) : 30MHz -30
200MHz -15
7. OPERATING TEMPERATURE RANGE : -40°C ~ +85°C
8. ROHS COMPLIANT

						TITLE 100/1000 BASE-T TRANSFORMER	
				UNITS:		SAFETY	
RELEASE						SHEET 1 OF 1	
DESCRIPTION				DATE		P/N:	
NO:				BY		DRAW	
REVISIONS				CHK		DATE	
APPD				DATE		DRAW	